

The Ability of Novel Urinary Biomarkers (NGAL and IL-18) in Predicting the in-Hospital Mortality, the Need of Renal Replacement Therapy and the Future Development of Chronic Kidney Disease in Post-Cardiac Surgery Acute Kidney Injury Patients: A New Horizon of Hope on the Anvil

Rajesh Jayaraman^{1,*}, Sham Sunder¹, Vijay Kumar Gupta², Neera Sharma³, Satyanand Sathi¹, Himanshu Mahapatra¹, Venkataramana Krishnamurthy¹, Himanshu Verma¹, Prabhu Kanchi¹, Anurag Gupta¹, Pranit Ram¹, and Sunil Kumar Daksh¹

¹Department of Nephrology, Ram Manohar Lohia Hospital, New Delhi, India

²Department of Cardio-Thoracic Surgery, Ram Manohar Lohia Hospital, New Delhi, India

³Department of Biochemistry, Ram Manohar Lohia Hospital, New Delhi, India

*Corresponding author: Rajesh Jayaraman, Post Graduate, Department of Nephrology, Ram Manohar Lohia Hospital, New Delhi, India, Phone: 82482 11454; E-mail: rajeshumadevijayaraman@gmail.com

Received: 18 Apr, 2020 | Accepted: 04 May, 2020 | Published: 08 May, 2020

Citation: Jayaraman R, Sunder S, Gupta VK, Sharma N, Sathi S, et al. (2020) The Ability of Novel Urinary Biomarkers (NGAL and IL-18) in Predicting the in-Hospital Mortality, the Need of Renal Replacement Therapy and the Future Development of Chronic Kidney Disease in Post-Cardiac Surgery Acute Kidney Injury Patients: A New Horizon of Hope on the Anvil. *Int J Nephrol Kidney Fail* 6(2): dx.doi.org/10.16966/2380-5498.194

Copyright: © 2020 Jayaraman R, et al. This is an open-access article distributed under the terms of the Creative Commons Attribution License, which permits unrestricted use, distribution, and reproduction in any medium, provided the original author and source are credited.

Abstract

Background: Novel urinary biomarkers have always remained/continue to remain a fascinating area of exploration in the domain of modern nephrology. They are promisingly convincing in obviating the major disadvantages of creatinine in the setting of Acute Kidney Injury (AKI). The specific novel tubular markers include Neutrophil Gelatinase Associated Lipocalin (NGAL), Interleukin-18 (IL-18), Kidney Injury Molecule-1 (KIM-1), Hepatocyte growth factor, Osteopontin and Fatty acid binding proteins.

Methods: Hundred patients who underwent cardiac surgery in our institution were enrolled. The pattern of AKI including its incidence, the performance of the biomarkers NGAL and IL-18 in predicting the requirement of Renal Replacement Therapy (RRT), the in-hospital mortality and the future development of Chronic Kidney Disease (CKD) were all studied.

Prospective patients above 18 years of age undergoing elective cardiac surgery, those without evidence of pre-existing CKD and without AKI were included. Statistical analysis was performed using STATA 11.0 (Stata Corp LP, College Station, TX, USA). Shapiro-Wilk test was applied to test for normality of continuous variables. Categorical data were analysed using chi-square test.

Results: Both adjusted (adjusted for urinary creatinine) and unadjusted NGAL at 7 days post-operative predicted the in-hospital mortality perfectly. A 7th day adjusted NGAL value of 808.46 pg/mg of creatinine was probably the best predictor of in-hospital mortality. An adjusted 7th day IL-18 of >704.45 pg/ml predicted a mortality risk close to that observed with NGAL. Urinary NGAL of 650 pg/ml predicted the need of RRT to 85%. Urinary IL-18 was not a reliable predictor of RRT. Both the biomarkers predicted the future development of CKD reliably. Serum creatinine was inferior to both in predicting the in-hospital mortality and the need of RRT.

Conclusions: Raised urinary biomarkers NGAL, IL-18 in cardiac surgery patients are reliable indicators of predicting the in-hospital mortality the need of RRT and the future development of CKD than serum creatinine in post-cardiac surgery AKI patients.

Keywords: Post-Cardiac Surgery; Acute Kidney Injury; NGAL; IL-18

Introduction

Acute kidney injury (AKI) is a common and serious complication of cardiothoracic surgery [1]. Depending on the definition of AKI used, the incidence may be as low as 7.7% to as high as 28%, necessitating RRT in 1% to 5% [2-9]. In our study, we found an incidence

of 31%. In order to recapitulate the basic physiology of NGAL and IL-18, their roles and function at the molecular level, the readers are requested to have a glimpse on the background section of the first half of our study. Our research article embraced six broader ranges of objectives as follows.

The incidence of AKI in post-cardiac surgery patients in our institution. The ability of both the biomarkers in detecting AKI early when compared to serum creatinine. Their precision in differentiating pre-renal from intrinsic AKI. Their efficiency in predicting the need of RRT, the in-hospital mortality and the future development of CKD over subsequent follow-ups.

Our present study emphasises the role of both the biomarkers in predicting the in-hospital mortality after cardiac surgery as the main objective with their efficacy in predicting the need of RRT and the future development of CKD as the secondary objectives.

Subjects and Methods

This is an open-labelled non-randomized prospective observational study lasting for 18 months from the time of enrolling the patients to the completion of the study. 100 patients were selected without any bias who got admitted to the cardiothoracic surgery department in Ram Manohar Lohia Hospital, New Delhi, India to undergo elective cardiac surgery between January 2012 and June 2013. Informed consent was obtained from all patients included in the study. Elective cardiac surgeries include Coronary Artery Bypass Grafting (CABG) both on and off pump, valve repairs, mitral and aortic valve replacements and atrial and ventricular septal defect closures.

Inclusion and exclusion criteria, clinical/laboratory parameters, the method of estimation of urinary biomarkers and the details of the follow-up

All the patients who took part in the study met the following inclusion criteria:

- Prospective patients above 18 years of age undergoing elective cardiac surgery.
- Patients who did not have any evidence of pre-existing CKD as explained by normal kidney size and echogenic pattern in ultrasound kidney-ureter-bladder.
- Patients with normal pre-operative baseline blood urea and serum creatinine.
- Patients with no documented evidence of any AKI or recovery from AKI in the past.

The following patients were excluded from the study:

Patient's ≤ 18 years of age, post renal transplant patients, patients with any past evidence of CKD including chronic proteinuria, ultrasonographic evidence of shrunken kidneys and altered echogenicity, deranged baseline renal function, patients with any documented evidence of past AKI or recovery from AKI were excluded from the study.

Patients were evaluated at 3 definite pre-determined time points of their hospital stay, including pre-operatively on the morning of the day of surgery, 24 hours after completion of the surgery, and 7 days after completion of the surgery.

Following were the patient's characteristics and parameters estimated on the morning of the day of surgery, 24 hours and 7 days after surgery: Demographic details, past medications, baseline creatinine in mg/dL, urine output in mL/h, 24 hours urinary creatinine in mg/dL, urinary NGAL in pg/mL, urinary NGAL adjusted to urinary creatinine in pg/mg of creatinine, urinary interleukin-18 in pg/mL and also adjusted to urinary creatinine in pg/mg of creatinine, and fractional excretion of sodium and urea (FENa and FEurea).

Glomerular Filtration Rate (GFR) was measured as per 4-variable modification of diet in renal diseases (MDRD) formula. Both FENa

and FEurea were used to differentiate pre renal from intrinsic AKI. Biomarkers' values were expressed in unadjusted forms and adjusted to urinary creatinine to correct for variations in urine flow. The pre-operative values were considered the baseline values of the patients. Fresh midstream urine samples were collected for the measurement of the biomarkers and urinary creatinine. Biomarkers were measured by ELISA using BIORAD ELISA kits. Hycult biotech-HK 330 human NGAL ELISA kit was used for urinary NGAL measurement and IL-18 was measured using MBL human IL-18 ELISA kit. Urinary NGAL of <60 pg/mL and IL-18 of <257 pg/mL was considered as normal as per the standardization provided by the laboratory kits. Both the markers were adjusted with urinary creatinine and compared with their unadjusted parameters in the study. Plasma and urine creatinine were measured by alkaline picrate reaction, blood urea by urease methodology and all the other routine investigations were done by "automated clinical chemistry analyser". Persons' who did not develop AKI were taken as controls.

In addition, all those 31 individuals who developed AKI during the study were followed-up for at least 3 months and beyond depending upon their compliance. Serum creatinine, blood urea and all the other basic parameters were estimated serially after developing AKI, at the end of three months and periodically after that to see for the development of CKD and its progression, if any (Figure 1).

Statistical analysis

Statistical analysis was performed using STATA 11.0 (Stata Corp LP, College Station, TX, USA). Shapiro-Wilk test was applied to test for normality of continuous variables. Parametric data were described as mean \pm standard deviation. Median and Inter-quartile Range (IQR) were used to describe nonparametric data. Mann-Whitney test was employed to compare the non-parametric data between two groups. Categorical data were analysed using chi-square test. A P-value of <0.05 was considered statistically significant. Logistic regression was employed to predict the categorical outcome from the independent variables. Area under curve (AUC) was utilized to determine at point of different parameters to distinguish between the subjects in AKI and normal (control) group.

Observations and Results

Biomarkers' predictability regarding the in-hospital mortality

The in-hospital mortality and the co-existent organ dysfunction were mainly assessed through APACHE II scoring which employs varied parameters for different organ dysfunctions. The rising score was compared with the level of the biomarkers and graphs were plotted accordingly. A positive correlation was found between the rising APACHE II scores and rising levels of both the adjusted and unadjusted NGAL and IL-18. Median APACHE-II score in AKI patients was 12.37 (IQR, 10 to 16.4) and 8 for controls (IQR, 7.3 to 9). The observed difference was statistically significant; $p < 0.0001$, Mann-Whitney test. The median duration of ICU stay was 4 days for both AKI and controls with an IQR of (3-7) for the former and 3.5 to 5 for the latter. Both were not statistically different. ($p=0.42$, Mann-Whitney test) (Figure 2).

NGAL and IL-18 were tested individually and in combination for their ability to predict the overall mortality in patients with AKI in our study. Mortality consistently increased with unadjusted 24 hr NGAL level of >50 pg/mL and with >500 pg/mL with a mortality of 60%. Adjusted NGAL at 24 hrs gave more refined results. A value of 1800-1900 pg/mg of creatinine was associated with 90% in-hospital mortality (Figures 3 and 4).

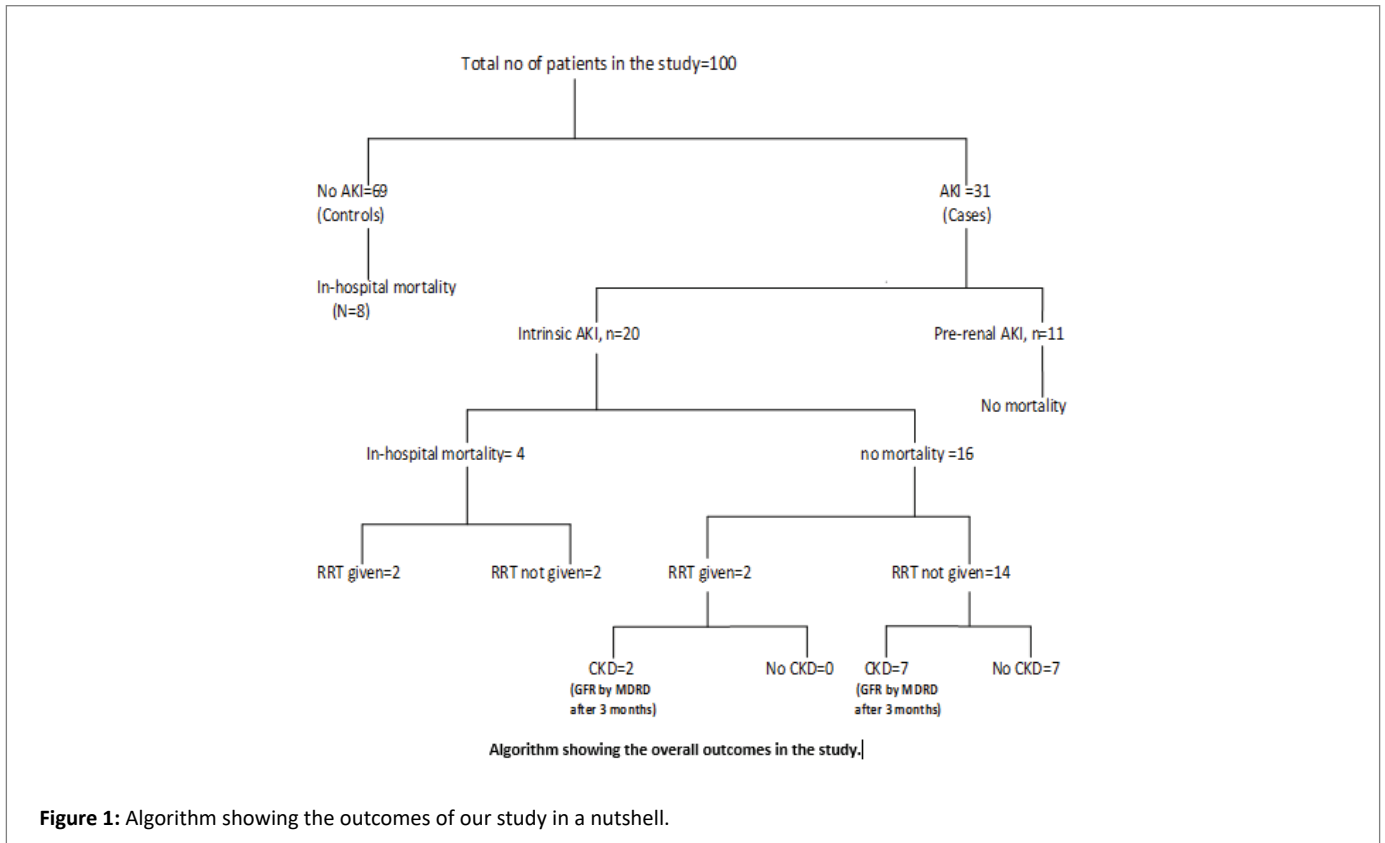


Figure 1: Algorithm showing the outcomes of our study in a nutshell.

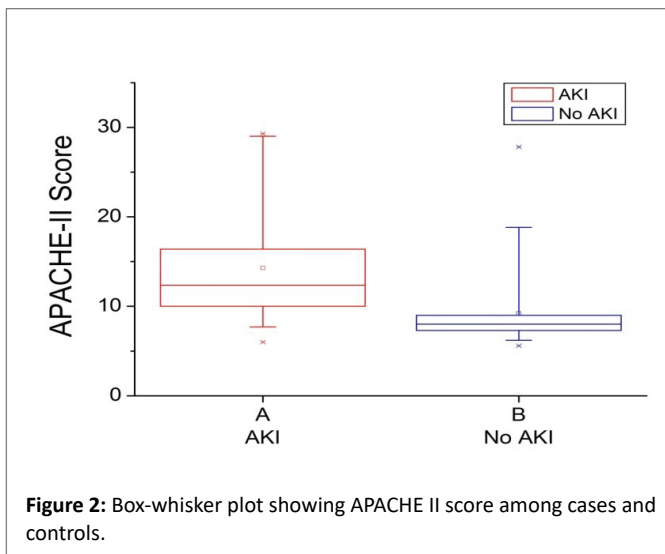


Figure 2: Box-whisker plot showing APACHE II score among cases and controls.

The risk of in-hospital mortality increased with 24 hr IL-18 of >250pg/mL. With a value of 400 pg/ml, the mortality was 60% and with a value of >550 pg/mL, it was up to 85%.

Both adjusted and unadjusted NGAL at 7 days post-op predicted the in-hospital mortality perfectly. A 7th day adjusted NGAL value of 808.46 pg/mg of creatinine was probably the best predictor of in-hospital mortality among all the parameters observed in the study.

Similarly, a persistently elevation by the 7th day IL-18 consistently predicted an increased mortality. A value of >350 pg/mL predicted 40% mortality while 450 pg/mL and 600 pg/mL predicted a mortality

approximately 65% and 80%, respectively. An adjusted 7th day IL-18 of >704.45 pg/mL predicted a mortality risk close to that observed with NGAL (Figure 5).

Mortality prediction by creatinine on the 7th post-operative day was found to be inferior to the other two markers, with a creatinine of 2.3-2.4 mg% predicting a mortality of 15% and a creatinine of 4.2 mg%, a mortality of 38%. This could be considered as a bias created by the initiation of RRT that reduces the serum creatinine level rather than the poor performance of creatinine itself, as 3 out of 4 patients with AKI who expired in ICU were dialysis dependent. 7th day creatinine was also compared with the biomarker levels in those who developed CKD as per the estimated GFR during the 3 months of follow-up.

Prediction of the need of RRT by the biomarkers

24 hr NGAL was a reliable predictor of the need for RRT. Beyond a value of 100 pg/mL, the probability for requirement of RRT consistently increased. At a value 500 pg/mL, it was 60% and with a value of 600-650 pg/mL, the risk went up to 85%. An adjusted NGAL was also found to be a perfect predictor of RRT in post-cardiac surgery patients. 24 hr IL-18 was not a significant predictor of RRT (p=0.23, logistic regression). 24 hr NGAL + IL-18 predicts RRT perfectly. The combination was not found to be superior to NGAL alone. While adjusted NGAL gave the same significance as its unadjusted counterpart, adjusted IL-18 was not a significant predictor of RRT (p=0.49, logistic regression).

The probability of predicting RRT based on the rise in serum creatinine at 24 hrs was found to be low, being around 18% when creatinine was between 1.4 and 1.8. This low probability in part might be attributed to the inability of creatinine to rise in the serum at 24 hrs of AKI as did the other two urinary biomarkers (Figure 6).

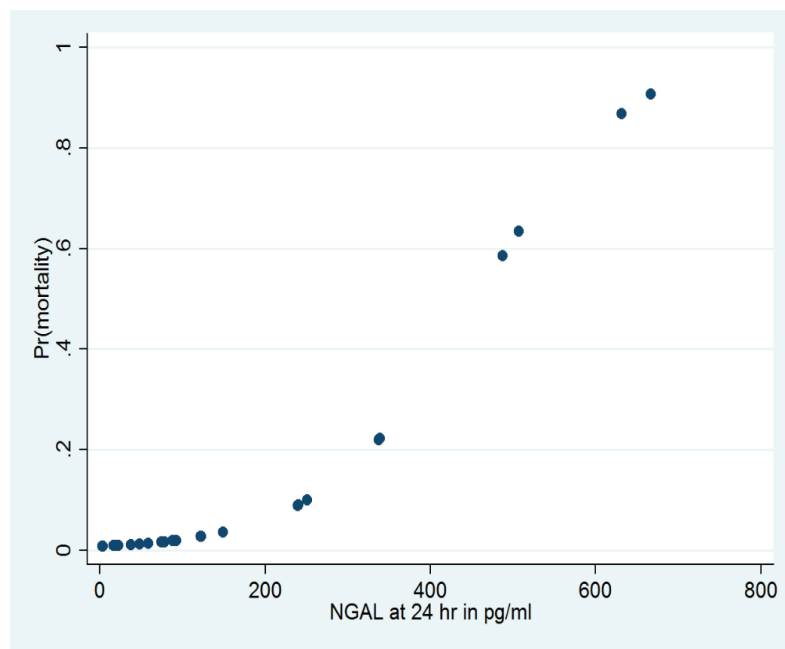


Figure 3: Scatter-plot showing 24 hr unadjusted NGAL and mortality prediction.

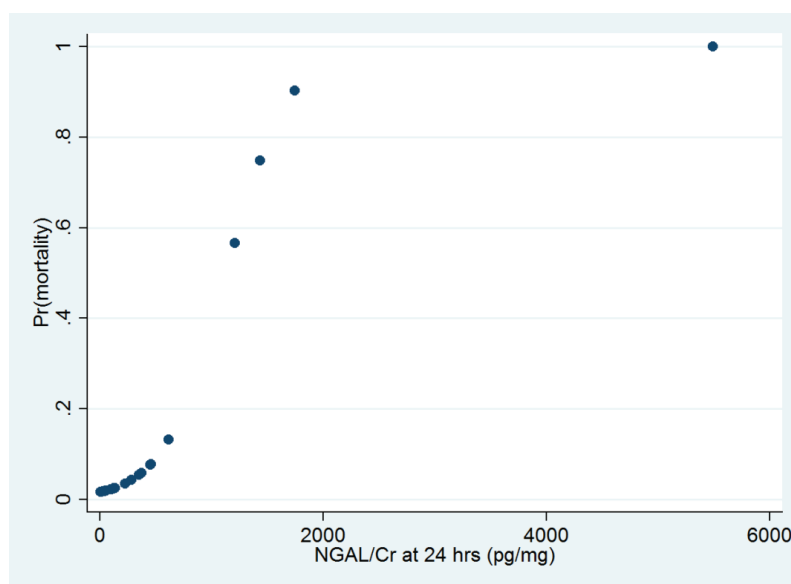


Figure 4: Scatter-plot showing 24 hr adjusted NGAL and its relation to mortality.

24 hr IL-18 was not a significant predictor of RRT ($p=0.23$, logistic regression). 24 hr NGAL + IL-18 predicted RRT perfectly. The combination was not found to be superior to NGAL alone. Both the adjusted and unadjusted NGAL provided the same level of significance (Figure 7).

Biomarkers' ability to predict the future development of CKD in those with AKI

An unadjusted and adjusted 7th day NGAL of >49.6 pg/mL and >68.21 pg/mg were probably the best predictors for the development of CKD followed by adjusted and unadjusted IL-18. An adjusted 7th day IL-18 of 520pg/mL and an unadjusted value of 400 pg/mL predicted the development of CKD close to that of NGAL (Figure 8).

Discussion

Novel biomarkers namely NGAL and IL-18 have thoroughly transformed the domain of investigative nephrology including early diagnosis, assessing severity and in predicting the prognosis in various forms of AKI.

In a study done by Bennett M, et al. [10], AKI developed in 99 of 196 patients in whom a diagnosis due to creatinine was delayed up to 3 days after CPB. In contrast, mean urine NGAL levels increased 15-fold within 2 h and by 25-fold at 4 and 6 h after CPB. The 2-h urine NGAL levels correlated with severity and duration of AKI, length of stay, dialysis requirement, and death.

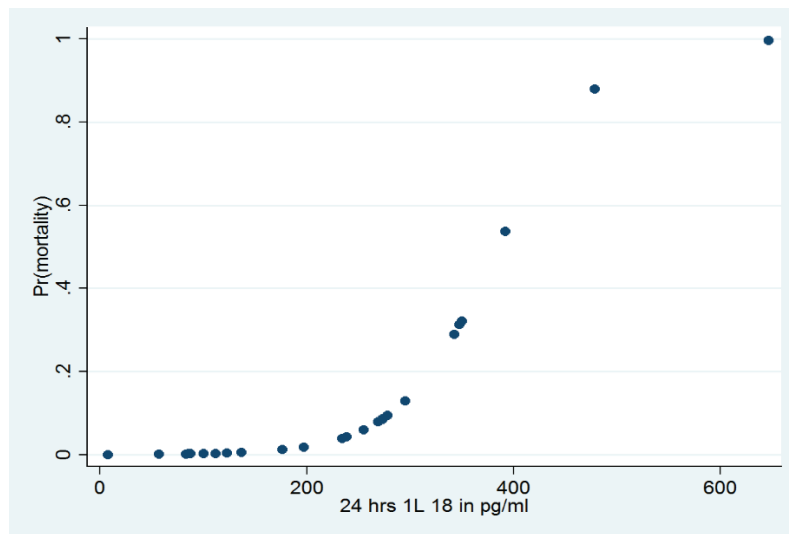


Figure 5: 24 hr urinary IL-18 and its role in mortality prediction.

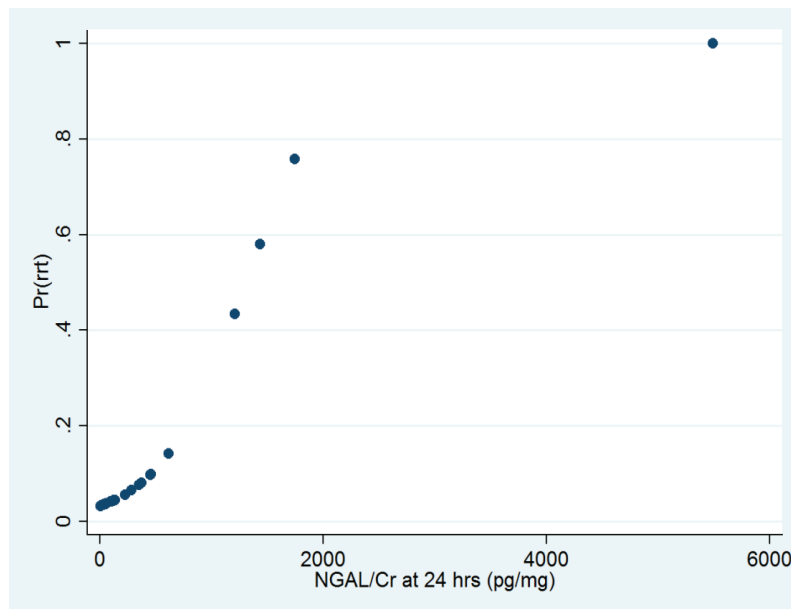


Figure 6: Adjusted NGAL and RRT prediction.

In various studies [11-17] done on this biomarker, Urine NGAL peaked immediately after cardiac surgery and remained significantly higher 3, 18 and 24 h after surgery. Two hours postoperative plasma NGAL strongly correlated with changes in creatinine, duration of AKI, length of hospital stays and mortality.

Pezeshgi A, et al. [18] in their recent study couldn't establish the ability of urinary NGAL in diagnosing AKI early and in the prediction of mortality among the observed post coronary artery bypass patients. The obvious reason for the underperformance of the novel biomarker would be the low sample size taken into consideration in their study.

In our study, rising urinary NGAL levels were very well correlated with raising APACH II scoring, in-hospital mortality and requirement of RRT. A positive correlation was found between both adjusted and unadjusted NGAL and raising APACHE II score through linear re-

gression. In-hospital mortality consistently increased with unadjusted 24 hr NGAL level of >50 pg/mL and with a 24 hr value of >500 pg/mL, the mortality was over 60%. An adjusted NGAL value of 1800-1900 pg/mg of creatinine at 24 hrs was associated with 90% in-hospital mortality. A 7th day adjusted NGAL value of 808.46 pg/mg of creatinine was probably the best predictor of in-hospital mortality.

To the best of our knowledge, ours is probably the first study to predict the increased risk of CKD in those post-cardiac surgery patients with AKI whose seventh day urinary biomarker levels remained very high. An unadjusted 7th day NGAL of >49.6pg/mL and an adjusted 7th day NGAL/Cr >68.21 pg/mg best predicted the development of CKD.

Lobato GR, et al. [19] in their exploration found that Urinary NGAL was predictive of CKD progression, end stage renal disease and death in non-dialyzed patients and was associated with an increased risk of

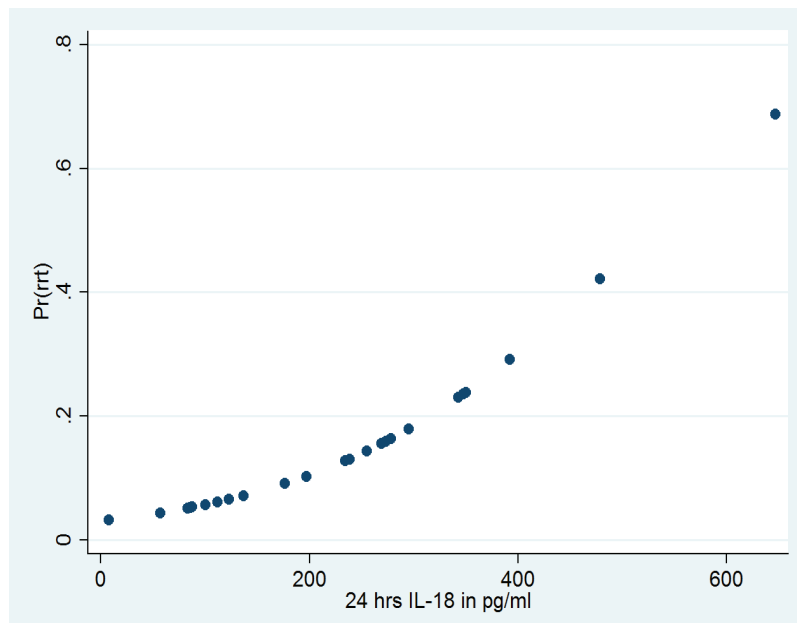


Figure 7: IL-18 and its RRT prediction.

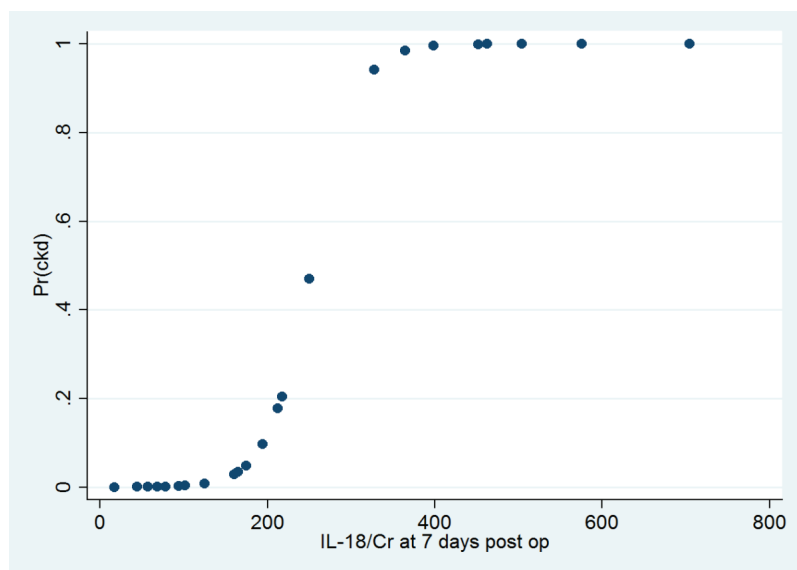


Figure 8: Adjusted urinary IL-18 and CKD prediction.

death in patients on dialysis. But here, the study cohort comprised of CKD patients in their early stages and not AKI.

Conclusions

The novel urinary biomarkers NGAL, IL-18 have been a breakthrough in many AKI states. In post-cardiac surgery patients, they are effective not only in early detection of AKI but their quantitative measure can precisely predict the need for RRT in the ICU settings, the in-hospital mortality and the future risk of developing CKD. Though NGAL and IL-18 appear promising in obviating various known demerits of creatinine, they do not have a worldwide distribution, which limits their application. Only sites with economic privilege have access to them.

Conflict of Interest

None

References

1. Wijeyesundera DN, Karkouti K, Dupuis JY, Rao V, Chan CT, et al. (2007) Derivation and validation of a simplified predictive index for renal replacement therapy after cardiac surgery. *JAMA* 297: 1801-1809.
2. Abel RM, Buckley MJ, Austen WG, Barnett GO, Beck CH Jr, et al. (1976) Etiology, incidence, and prognosis of renal failure following cardiac operations. Results of a prospective analysis of 500 consecutive patients. *J Thorac Cardiovasc Surg* 71: 323-333.

3. Andersson LG, Ekroth R, Bratteby LE, Hallhagen S, Wesslen O (1993) Acute renal failure after coronary surgery--a study of incidence and risk factors in 2009 consecutive patients. *Thorac Cardiovasc Surg* 41: 237-241.
4. Chertow GM, Levy EM, Hammermeister KE, Grover F, Daley J (1998) Independent association between acute renal failure and mortality following cardiac surgery. *Am J Med* 104: 343-348.
5. Conlon PJ, Stafford-Smith M, White WD, Newman MF, King S, et al. (1999) Acute renal failure following cardiac surgery. *Nephrol Dial Transplant* 14: 1158-1162.
6. Mangano CM, Diamondstone LS, Ramsay JG, Aggarwal A, Herskowitz A, et al. (1998) Renal dysfunction after myocardial revascularization: risk factors, adverse outcomes, and hospital resource utilization. The Multicenter Study of Perioperative Ischemia Research Group. *Ann Intern Med* 128: 194-203.
7. Ostermann ME, Taube D, Morgan CJ, Evans TW (2000) Acute renal failure following cardiopulmonary bypass: a changing picture. *Intensive Care Med* 26: 565-571.
8. Tuttle KR, Worrall NK, Dahlstrom LR, Nandagopal R, Kausz AT, et al. (2003) Predictors of ARF after cardiac surgical procedures. *Am J Kidney Dis* 41: 76-83.
9. Zanardo G, Michielon P, Paccagnella A, Rosi P, Calo M, et al. (1994) Acute renal failure in the patient undergoing cardiac operation. Prevalence, mortality rate, and main risk factors. *J Thorac Cardiovasc Surg* 107: 1489-1495.
10. Bennett M, Dent CL, Ma Q, Dastrala S, Grenier F, et al. (2008) Urine NGAL predicts severity of acute kidney injury after cardiac surgery: a prospective study. *Clin J Am Soc Nephrol* 3: 665-673.
11. Wagener G, Jan M, Kim M, Mori K, Barasch JM, et al. (2006) Association between increases in urinary neutrophil gelatinase-associated lipocalin and acute renal dysfunction after adult cardiac surgery. *Anesthesiology* 105: 485-491.
12. Haase-Fielitz A, Bellomo R, Devarajan P, Story D, Matalanis G, et al. (2009) Novel and conventional serum biomarkers predicting acute kidney injury in adult cardiac surgery--a prospective cohort study. *Crit Care Med* 37: 553-560.
13. Haase M, Bellomo R, Devarajan P, Ma Q, Bennett MR, et al. (2009) Novel biomarkers early predicts the severity of acute kidney injury after cardiac surgery in adults. *Ann Thorac Surg* 88: 124-130.
14. Haase-Fielitz A, Bellomo R, Devarajan P, Bennett M, Story D, et al. (2009) The predictive performance of plasma neutrophil gelatinase-associated lipocalin (NGAL) increases with grade of acute kidney injury. *Nephrol Dial Transplant* 24: 3349-3354.
15. Tuladhar SM, Püntmann VO, Soni M, Punjabi PP, Bogle RG, et al. (2009) Rapid detection of acute kidney injury by plasma and urinary neutrophil gelatinase-associated lipocalin after cardiopulmonary bypass. *J Cardiovasc Pharmacol* 53: 261-266.
16. Capuano F, Goracci M, Luciani R, Gentile G, Roscitano A, et al. (2009) Neutrophil gelatinase-associated lipocalin levels after use of mini-cardiopulmonary bypass system. *Interact Cardiovasc Thorac Surg* 9: 797-801.
17. Wagener G, Gubitosa G, Wang S, Borregaard N, Kim M, et al. (2009) A comparison of urinary neutrophil gelatinase-associated lipocalin in patients undergoing on- versus off-pump coronary artery bypass graft surgery. *J Cardiothorac Vasc Anesthesia* 23: 195-199.
18. Pezeshgi A, Behmanesh A, Esmaeilzadeh A, Chiti H, Kamali K, et al. (2020) Can urinary neutrophil gelatinase-associated lipocalin have a role in the early diagnosis of acute kidney injury after coronary artery bypass graft? *J Renal Inj Prev* 9.
19. Lobato GR, Lobato MR, Thomé FS, Veronese FV (2017) Performance of urinary kidney injury molecule-1, neutrophil gelatinase-associated lipocalin, and N-acetyl-β-D-glucosaminidase to predict chronic kidney disease progression and adverse outcomes. *Braz J Med Biol Res* 50: e6106.